

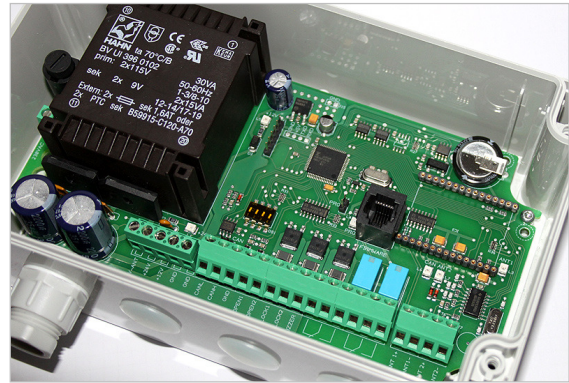
## Scankey acces control system

Acces with electronic keytags

### Introduction

With a Boutronic access control system you can specify who has access to your premises. Boutronic supplies various products that allow easy access to authorized individuals and keep unauthorized persons outside the door.

Our access control products are suitable for both indoor and outdoor use. You can choose from different combinations. Visit our website for more information about access control



### Scankey

The Scankey has a user access with an electronic keytag to unlock the door, the visitor simply holds the keytag for the antenna. The Scankey checks whether the visitor may enter the building checking the current day and time.

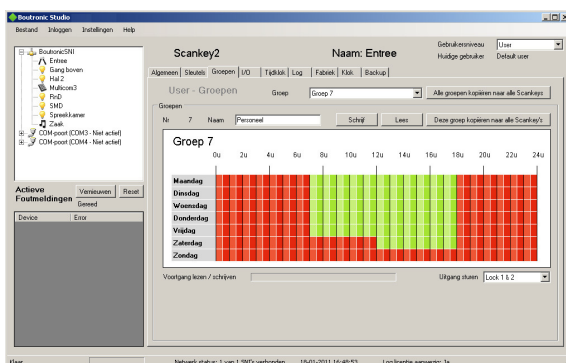
### Settings

With the Boutronic Studio or the Universal Display can change the settings of the Scankey. You can manage keys and organize users into user groups, for each group you can determine where and when access is granted. If you want to view a log (who, where and when had access), you can use the Boutronic Studio Pro license.



#### 1. Boutronic Universal Display

With the Universal Display you can set various Boutronic products. You can also display a fixed arrangement of a device link. You connect the Display on Scankey via RS232 or CAN bus.



#### 2. Boutronic Studio

This Windows application allows you to set various Boutronic products. You get all devices in an orderly package. You can download our free Studio from our website.

You can link the devices to your PC via:

- The Boutronic CAN bus (using the Boutronic SNI)
- A RS232/USB port on your PC. (use a Boutronic (USB) dongle)

## Scankey acces control systeem

Acces with electronic keytags

### Technical specifications

- Power in : ~230VAC 50/60Hz (special versions ~115VAC 50/60Hz)
- Power out : 12 and 24VDC 1A
- Housing : Plastic ABS (200 x 120 x 90mm)
- Keytags : Up to 400 keytags (including Priva Assist keytags)
- Network : Scankeys connecting with the Boutronic CAN-bus.
- Clock : Built in week clock for time, date and timer.
- Log : look back at all transactions with the 'Studio PRO licentie' (one time purchase amount).
- Studio : Windows XP/Vista/7. Language: Dutch, English and Deutsch

### Inputs

- Std antenne : Connection for the antenna.  
(You can connect 2 antenna's parallel).
- Ext antenne : Connection for special keytags. Example Priva or Alphasronics.
- Push Button : For leaving the building.

### Outlets

- Entering : 2 Connection for electronic dooropeners  
12/24VDC, 1A (NO, NC of toggle).
- Buzzer : Connection for the buzzer in the antenna or the doorunit.

### Design

The Scankey will be delivered in two parts:

- Inside : **Control**, placed in a plastic ABS housing with all the electronics.
- Outside\*: **de antenne**, to read the keys. In the antenna there are two leds red, Green and a buzzer

\* For inside use Boutronic delivers special inside antenna's.



Scankey antenna



Electronic keytag



Multicom doorunit with integrated Scankey